

MISSOURI BANDMASTERS ASSOCIATION

MISSOURI ALL-STATE BAND AUDITION MATERIALS

FRENCH HORN

Sets I, II, III, IV

Scales: All scales are to be MEMORIZED.

Prepare them all slurred and all tongued in sixteenth notes at quarter note = 88

Scales should be performed ascending and descending. Scales given are the starting tone. Do not transpose.

ALL scales are to be prepared from required scale sheet AS WRITTEN MEMORIZED.

Chromatic: full range of the instrument

Major Scales: C G D A E F Bb Eb Ab

Melodic Minor Scales: a e b f# c# d g c f

Books: Pottag-Hovey Method for French Horn, Book 2 – Warner Brothers

***60 Selected Studies for French Horn, Book 1 – C. Kopprasch/Carl Fischer Pub.*

Preparatory Melodies to Solo Work for French Horn – Pottag (edited)/Belwin Pub.

****Kalmus edition (newest edition) has the following changes:**

Set II: Page 12 #17 - Kalmus ed has a *piano* dynamic marking instead of a *forte* in m29. Play FORTE.

Set III: Page 8 #12 - CF has a single hash mark at the end of m15. Kalmus does not.

Set IV: Page 13 #19 - No dynamic marking in m21. CF has a *piano* marking. Please ADD piano marking.

Set I (2012-13)	Pottag-Hovey	p. 31	#128
	60 Selected Studies	p. 6 p. 20-21	#8 #30 – all
	Preparatory Melodies	p. 22	#56
Set II (2013-14)	Pottag-Hovey	p. 11	#40
	60 Selected Studies	p. 10 p. 12	#14 #17 ** see changes in Kalmus edition
	Preparatory Melodies	p. 17	#43
Set III (2014-15)	Pottag-Hovey	p. 39	#162
	60 Selected Studies	p. 4 p. 8-9	#3 #12 – all ** see changes in Kalmus edition
	Preparatory Melodies	p. 3	#5
Set IV (2015-16)	Pottag-Hovey	p. 24	#92
	60 Selected Studies	p. 5 p. 13	#6 #19 ** see changes above Kalmus edition
	Preparatory Melodies	p. 27	#67



MISSOURI ALL-STATE-BAND AUDITION SCALES

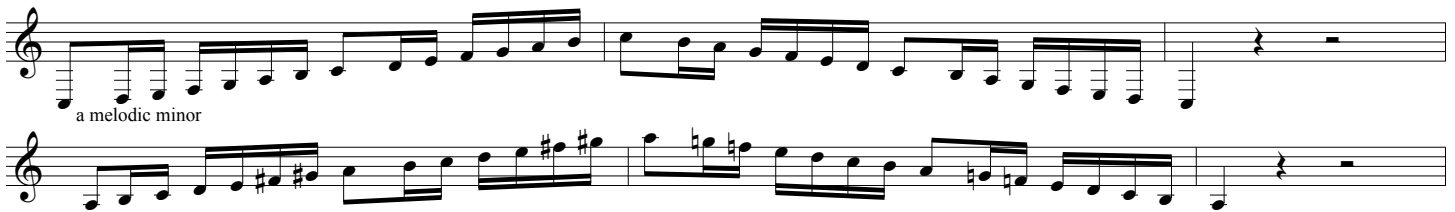
to be played at a minimum tempo of quarter note = 88

Horn

Chromatic Scale



C Major



F Major



Bb Major



Eb Major



Horn continued

Ab Major



f melodic minor



G Major



e melodic minor



D Major



b melodic minor



A Major



f# melodic minor



E Major



c# melodic minor

